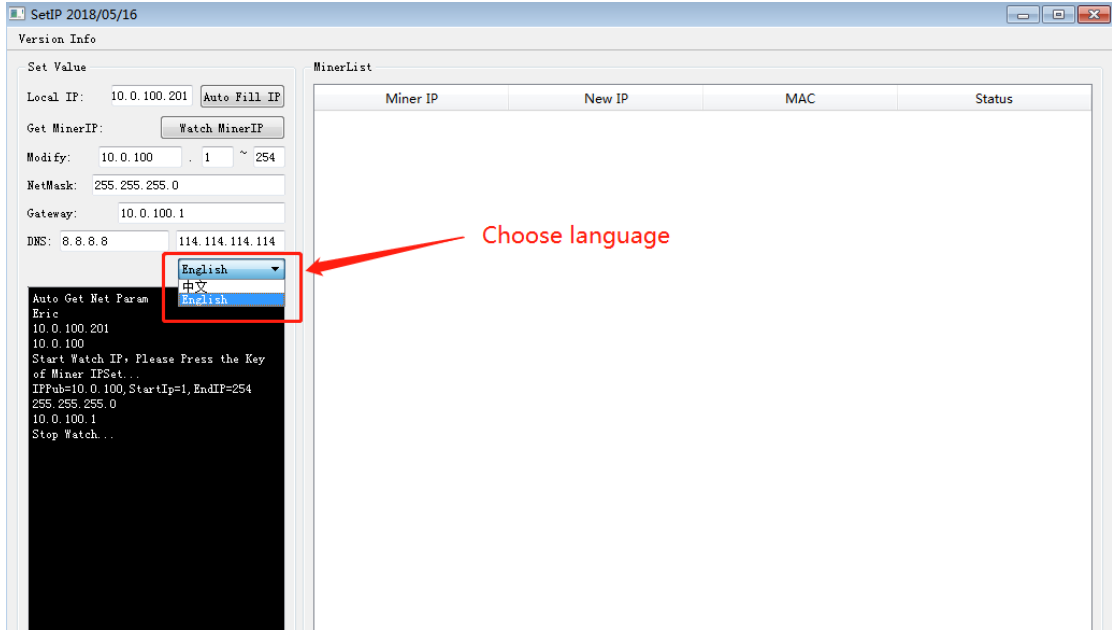
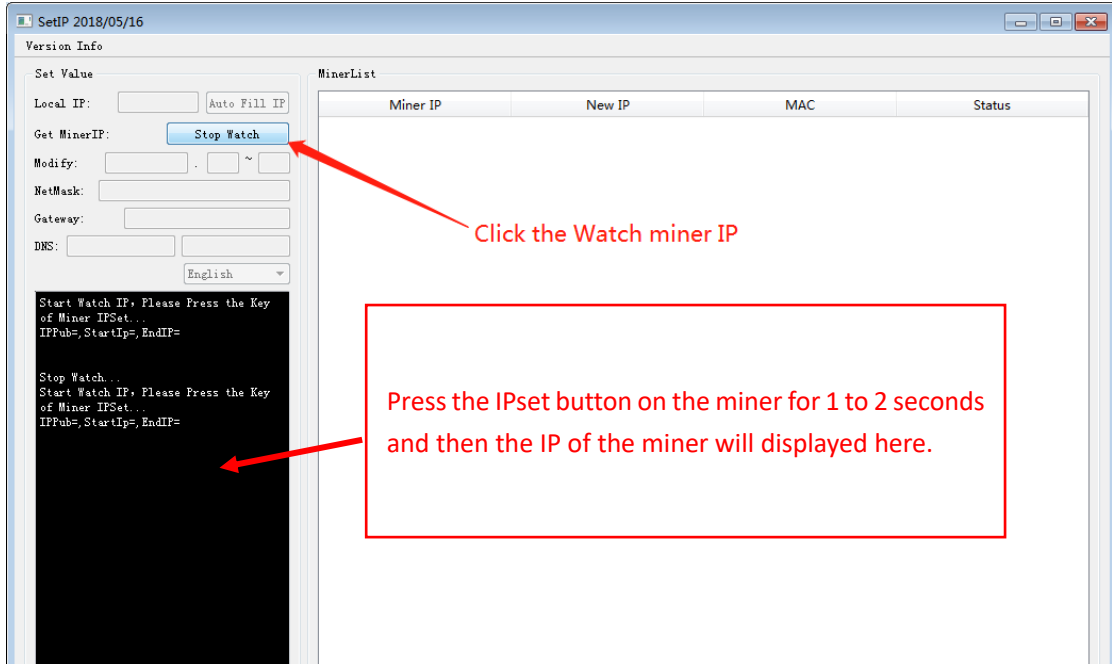


## SetIP User manual

- 1、 Save the tool on the PC in the same network with with the miner, then double click the tool and choose the language.



- 2、 Report the miner IP



- 3、 Set all the miners to Static IP in a batch by configuring the IP related settings as shown in the figure below:

The screenshot shows the SetIP(DM) software interface. The window title is "SetIP(DM) 2018/06/09". The interface is divided into several sections:

- Set Value:** Contains fields for "Local IP" (10.0.100.201), "Get MinerIP" (with a "Stop Watch" button), "Modify" (10.0.100.1 ~ 254), "NetMask" (255.255.255.0), "Gateway" (10.0.100.1), and "DNS" (8.8.8.8 and 114.114.114.114). A red box highlights the "Modify", "NetMask", "Gateway", and "DNS" fields.
- MinerList:** A table with columns for "Miner IP", "New IP", "MAC", and "Status".
- Terminal:** A black terminal window showing the following text:

```
Start Watch IP, Please Press the Key  
of Miner IPSet...  
IPPub=, StartIp=, EndIP=  
  
Stop Watch...  
Start Watch IP, Please Press the Key  
of Miner IPSet...  
IPPub=, StartIp=, EndIP=  
  
Stop Watch...  
Start Watch IP, Please Press the Key  
of Miner IPSet...  
IPPub=10.0.100, StartIp=1, EndIP=254  
255.255.255.0  
10.0.100.1
```
- Buttons:** "Skip" and "Export" buttons are located at the bottom.

Red arrows and text annotations provide instructions:

- "Click the Watch MinerIP icon" points to the "Stop Watch" button.
- "Fill in the IP range, NetMask, Gateway and DNS expected" points to the highlighted configuration fields.
- "Press the IPset button on the miner for one to two seconds and release the button when the normal indicator and fault indicator are lit at the same time." points to the terminal output.
- "Click the 'Skip' icon to avoid the IP conflict if the next IP to be set is already used by another machine." points to the "Skip" button.

At the bottom left, the version "V1.5 2018/08/15" is displayed. At the bottom right, the status "OffLine" is shown.