

INNOSILICON

T2Ti-25T BTC USER MANUAL



1.Overview	0
2. Assemble the miner	1
2.1 Open the package to check the miner	1
3.Operate the miner.....	4
3.1 Enter the miner console.....	4
3.2 Configure the pool	4
3.3 View the hash rate of the miner	5
3.4 Network configuration.....	5
3.5.1 Change the operate mode	6
3.5.2 Overview	6
3.5.3 Firmware upgrade.....	7
3.5.4 Modify the login password	7
3.5.5 Reboot.....	8
3.5.6 Factory reset	8

INNOSILICON CONFIDENTIAL

1.Overview



Specifications

Part Number	T2Ti-25T
Algorithm	Sha256
Size (L×W×H)	391mm (L) *141mm(W)*220mm (H)
Net Weight	9.0KG
Operating Temperature	0--45 °C(device junction temperature)
Network Connection	Ethernet

Typical Hash rate and Power Dissipation parameters under the four Modes: (Pls refer to 3.5.1 in the manual for mode modification)

Mode	Performance	Factory	Balance	Efficient
Hash rate	25TH±5%	23TH±5%	21TH±5%	20TH±5%
Power dissipation	2050W+10%	1880W+10%	1550W+10%	1360W+10%

2. Assemble the miner

2.1 Open the package to check the miner

- Check whether the warranty sticker is damaged, especially the one on hash boards PSU port side. If the warranty sticker is damaged when you receive the miner, please contact our after-sales personnel in time.
- Before assembling the miner, pls shake the miner gently. Please contact our after-sales personnel immediately if there is metallic collision sound.
- Check whether the two fans work well, if you find the fans broken please contact our after-sales personnel.
- The wiring of the miner shall not be changed including the power cable and data cable interface as shown in the figure below.



Notes:

There is an indicator on each hash board, which shows the work status of the hash board. Being constantly lit means the hash board works properly.

Flickering represents overtemperature of the hash board. Please check the fans of the miner, environment temperature and the ventilation conditions.

Being off means the hash board doesn't work. Please try to reboot the miner or change the data cable. Pls contact our after-sales team if the problem still exists.

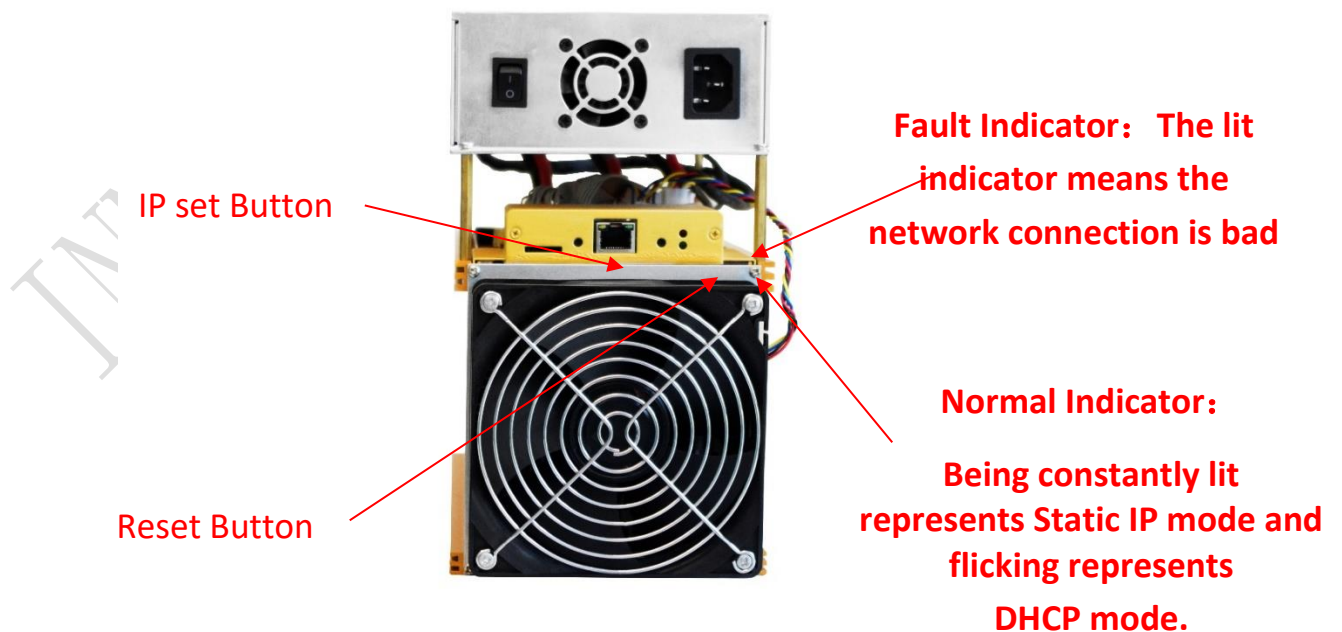
2.2 Assemble & Operate

Notes: The sequence of the PSU cable must be the same with that in the picture below. Damage caused by any private change is not covered by the warranty.



Connect the miner and the router by the Ethernet cable and then the miner can start to run after being powered on.

Notes: **T2T-25T miners consume much more power under some modes. Pls choose proper sockets.**



IP SET button:

Press it for 1 to 4 seconds and the following functions can be realized:

- (1) Sending the IP miner to the “Set IP” tool;
- (2) Changing the miner to a Static IP within the specific range with the IPset tool

Press it for 4 to 15 seconds, the miner IP will be switched to DHCP and the pool settings will be restored to default settings.

Press it for 15 to 30 seconds to switch the Dynamic (Static) IP to Static (Dynamic).

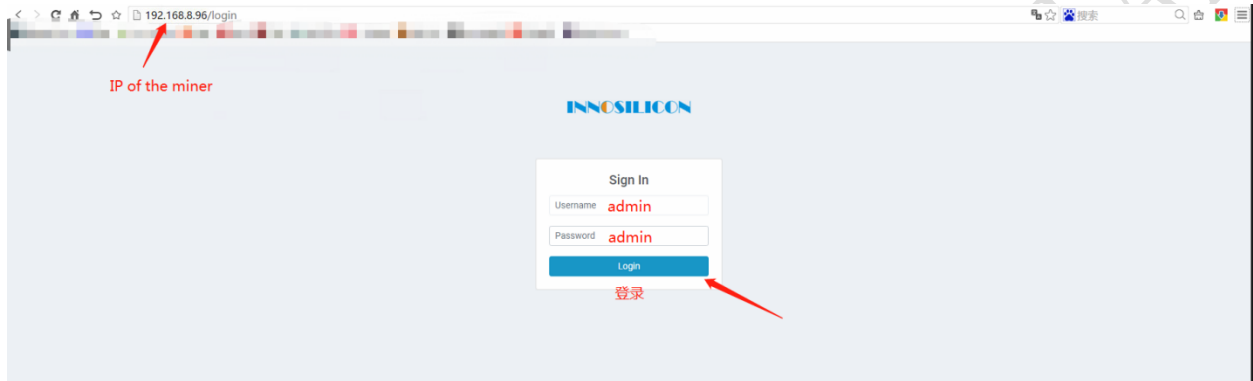
RESET button: Press the “Reset” button to restart the miner.

INNOVATION CONFIDENTIAL

3. Operate the miner

3.1 Enter the miner console

DHCP is the default IP mode of the miner (The normal indicator now is flickering in green when the DHCP service of the router is enabled.). Find the IP via the router or the IP scanner. Enter the IP of the miner in the browser and press the Enter button. Chrome is the suggested browser. (Please try with dragonadmin if the password admin is invalid.)



3.2 Configure the pool

Pls configure the pool to start mining after login.

Please use the suggested pool as below:

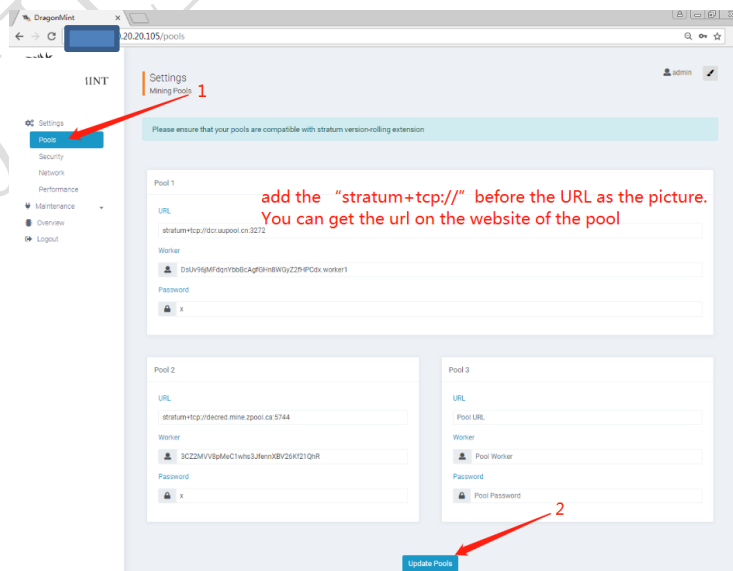
1 ckpool: stratum+tcp://cn.ckpool.org:443 or stratum+tcp://pool.ckpool.org:3333

2 slushpool: stratum+tcp://stratum.slushpool.com:3333

3 f2pool: stratum+tcp://btc-65536.f2pool.com:3333

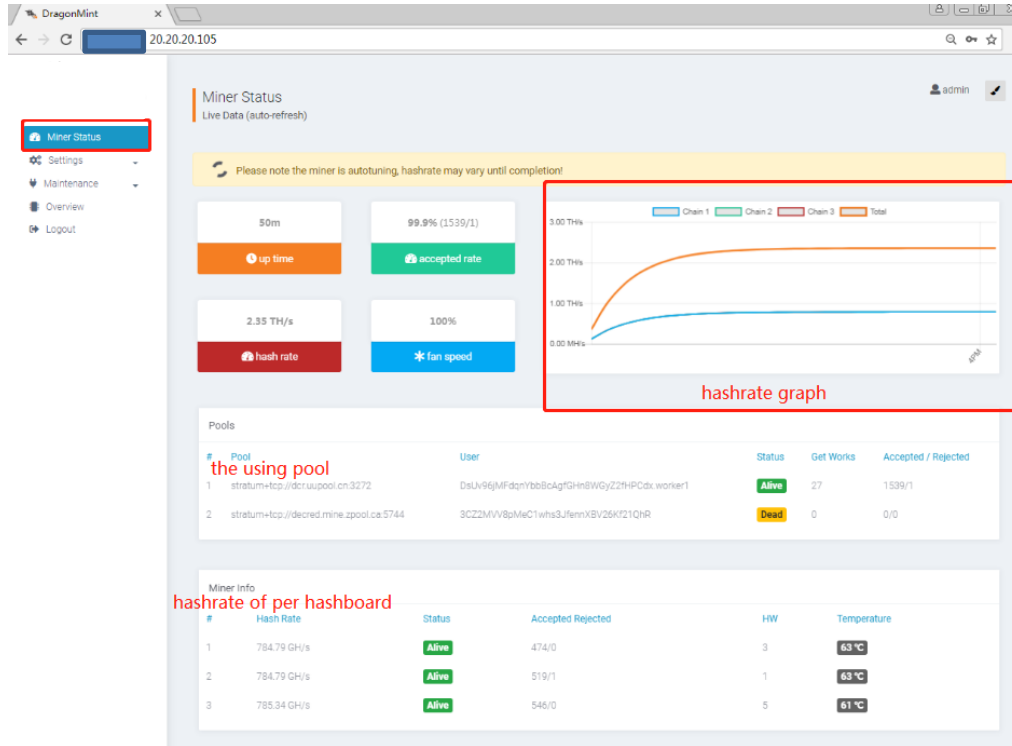
4 btc.top: stratum+tcp://t2.btc.top:8888 or stratum+tcp://bak.t2.btc.top:3333

5 poolin: stratum+tcp://btc-bj.ss.poolin.com:1800 or stratum+tcp://btc-sz.ss.poolin.com:1800

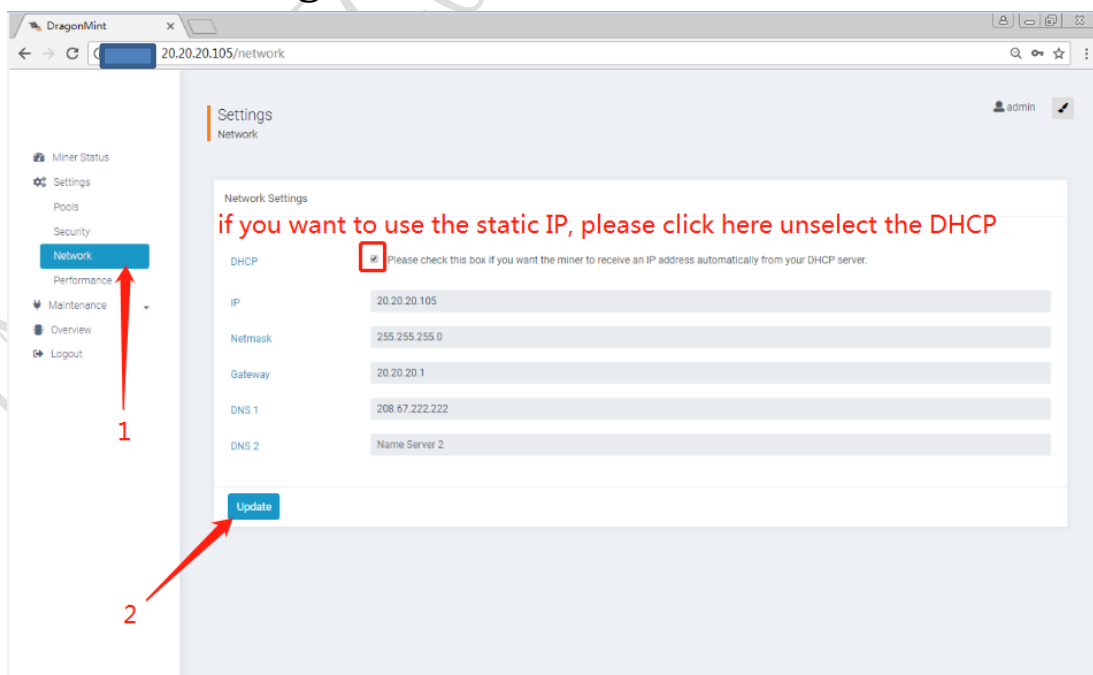


3.3 View the hash rate of the miner

After configuring the pool, the miner will mine for you. You can view the hash rate in the Miner Status screen.



3.4 Network configuration



3.5 Other pages

3.5.1 Change the operate mode

There are 4 modes available and please click the “Save” icon after your modification.

Miner Profile Performance

Profiles

There are 4 tuning modes

1. **Efficiency** the miner will use less power but the hash rate will be lower
2. **Balanced** recommended value to achieve balanced hash rate and power consumption
3. **Factory** the miner will work factory values
4. **Performance** high hash rate and high power consumption

Tuning takes about 30 minutes and the result will be saved and used for again at reboot.

Please note hashrate will vary during the tuning process.

Efficiency Balanced Factory Performance

Tuning Status

Current Mode: factory

Tuning Status: tuned

Save

3.5.2 Overview

DragonMint Overview

Version

Type	B29
Controller Version	g19
MAC Address	a0:b0:45:00:2f:94
Build Date	firmware version 17th of April 2018 12:42 PM
Platform Version	b29_20180417_124258

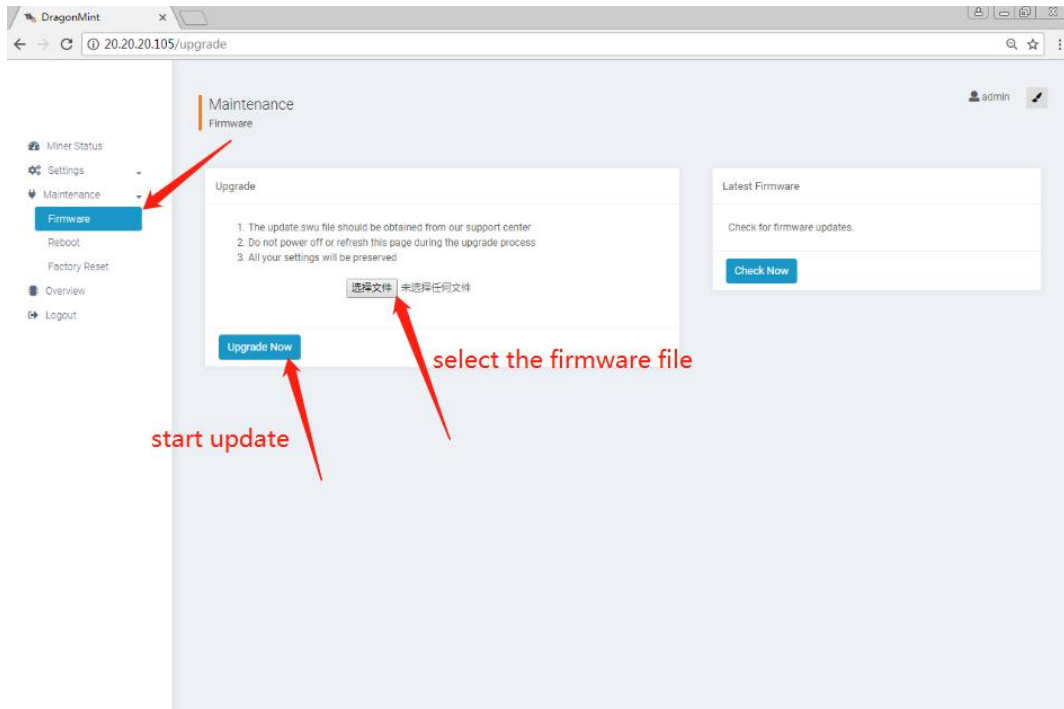
Network Status

Type	dhcp
IP	20.20.20.105
Netmask	255.255.255.0
Gateway	20.20.20.1
Name Server 1	208.67.222.222
Name Server 2	

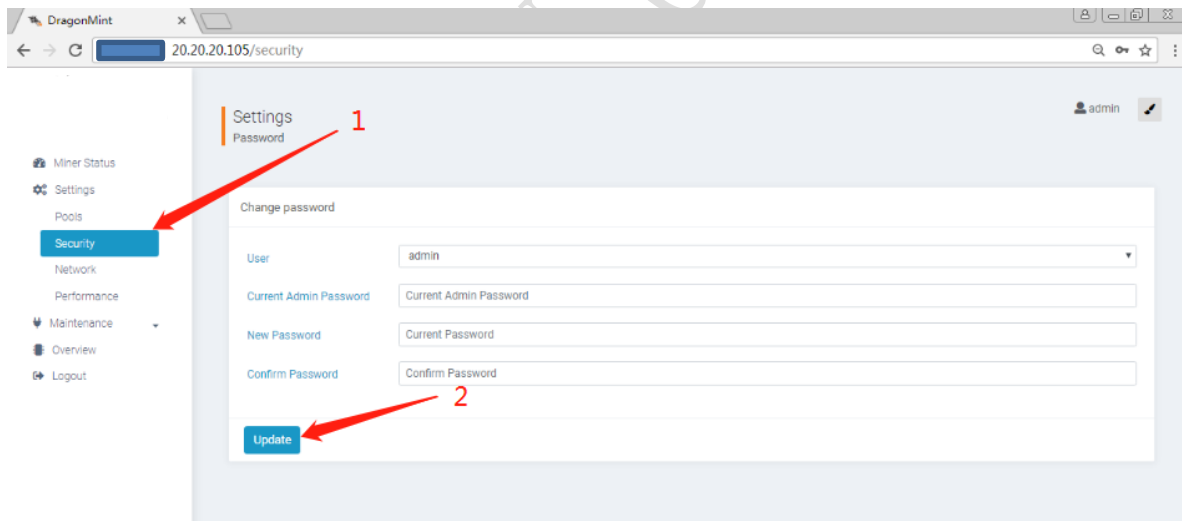
System

Uptime	08:08:10 up 57 min, load average: 0.73, 0.73, 0.67
Memory Used	55336 kb / 250544 kb 22%
Memory Free	195208 kb / 250544 kb 78%
Cached Used	33676 kb / 244628 kb 14%
Cached Free	210952 kb / 244628 kb 86%

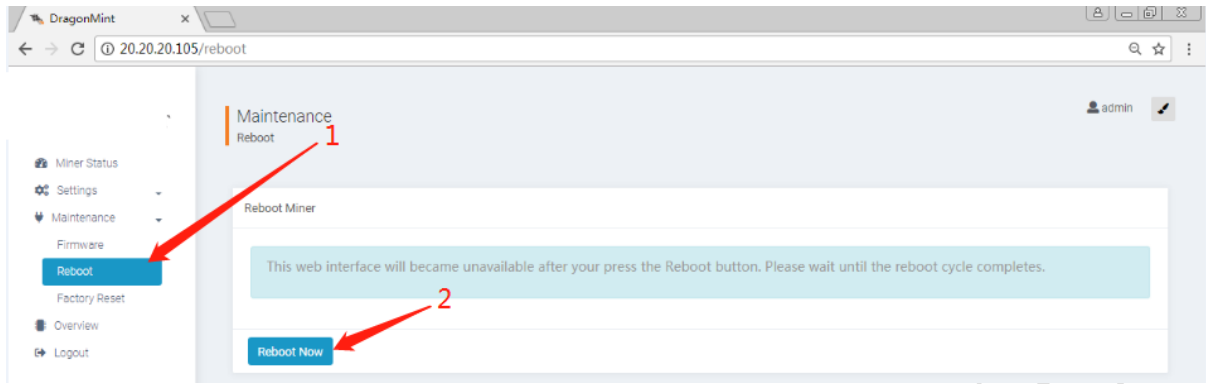
3.5.3 Firmware upgrade



3.5.4 Modify the login password



3.5.5 Reboot



3.5.6 Factory reset

