

Upgrade Through TF Card

1. Prepare a TF card (bigger than 16G) , and format it to Fat32(You can google it if you don't know how to do it).



2. Confirm that your miner's control board is G9 or G19.

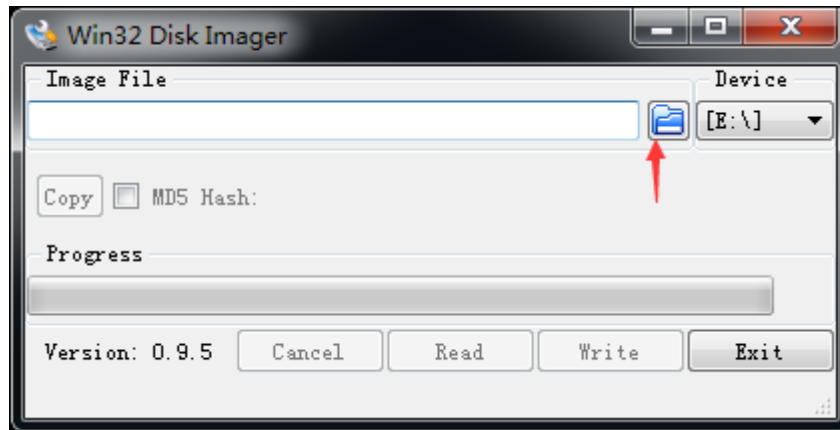


3. Download the corresponding Boot image from the “support center” matches to the control board Version of your miner and then **decompress it to the PC** and you can get a file(7.4G).
Support center: <http://www.innosilicon.com/html/downA4/index.html>

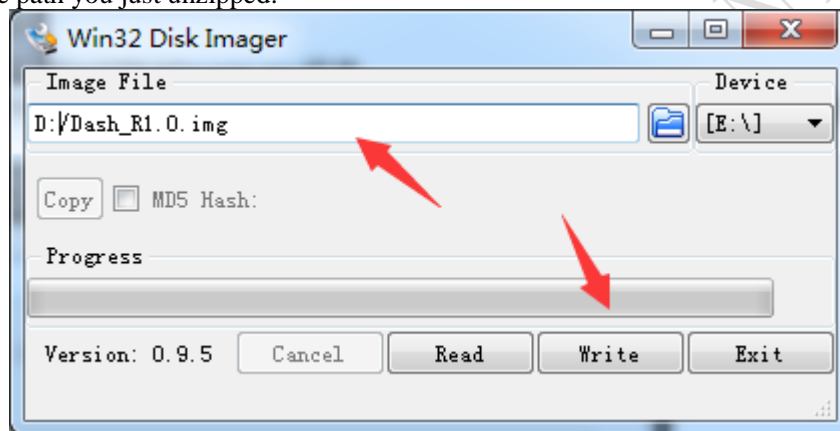


4. Download and run Win32DiskImager.exe program.

5. Insert TF card into the card reader and connect the card reader into the computer's USB port. Please make sure that the card reader is the only thing connected to the computer's USB port.

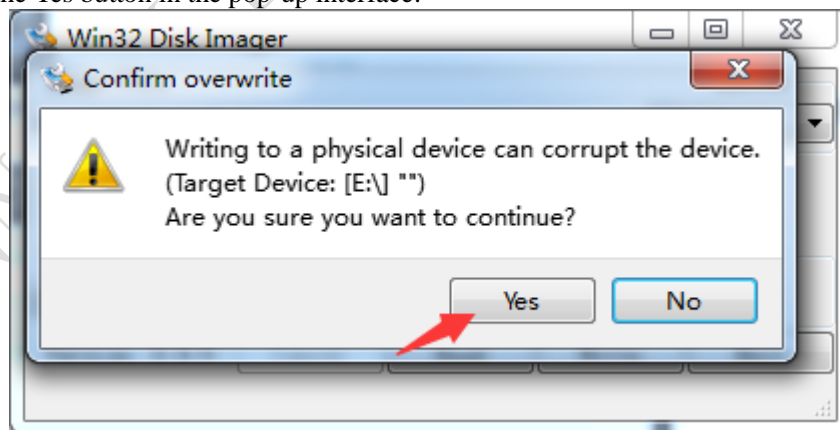


6. Win32DiskImager.exe will automatically recognize the USB drive. Click the folder icon to select the image file path you just unzipped.

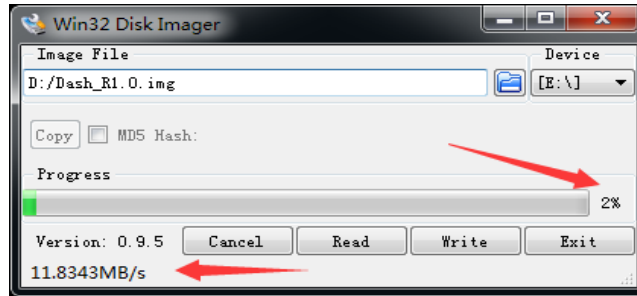


7. Select the Boot image and click the Write button on the **win32diskimager.exe** software interface.

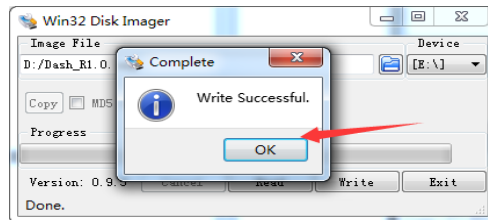
8. Click on the Yes button in the pop-up interface.



9. The lower left corner shows the speed of the card writing. The card progress percentage shown on the right. Wait until the progress percentage reach 100%.

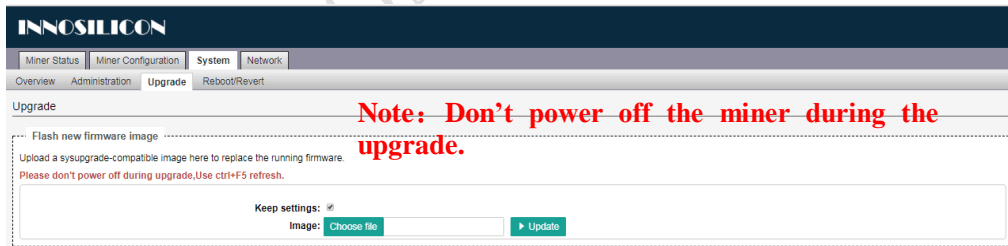


10. When the pop-up interface shows Write Successful, click the OK button. Then Please remove the card reader and take the TF card out.



11. **Please insert the TF card in the miner after press the RESET button**, then do as below:

- a) Make sure all the cables are connected correctly before powering up the machine. Enter the IP address of the miner at the browser bar to login the control page of the miner.
- b) Download the firmware from the “**Support center**” to the PC, you can get a **update.bin** file: Support center: <http://www.innosilicon.com/html/downA4/index.html>
- c) Select the “Upgrade” interface at System option, click to choose the firmware you want to upgrade, click the “update” to start the upgrade.



- d) When you see the progress bar reach to 100%, the miner will reboot. When the reboot is done. Upgrade done. **Then you can take the TF card out of the miner after press the RESET button**