

CONFIGURATION PROCEDURE A4

DEV-01-08Dec2016

Change Computer IP address

Requirement: To change your computer IP address you will need a computer with Windows 7 or 10, your A4 Dominator will need to be connected to network

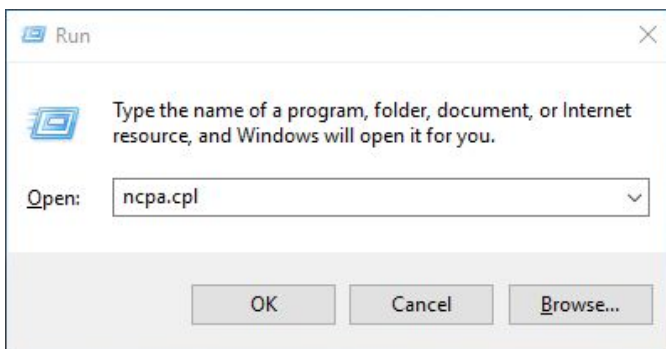
Steps

Please complete all tasks in the order listed:

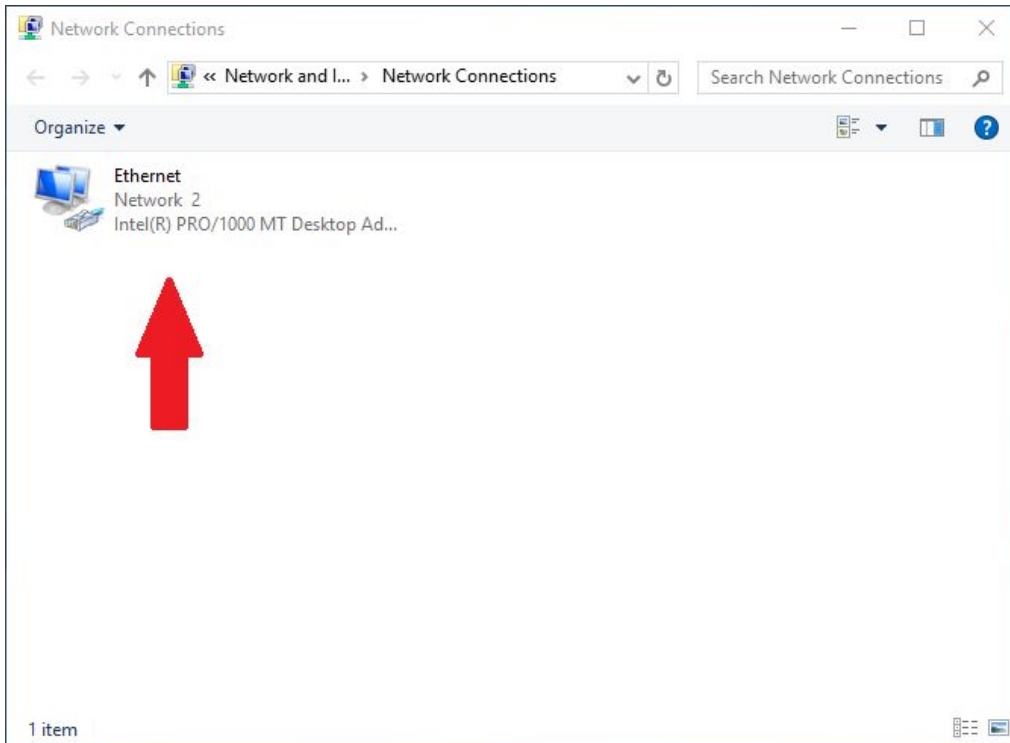
1. Press the button (Windows + R) :



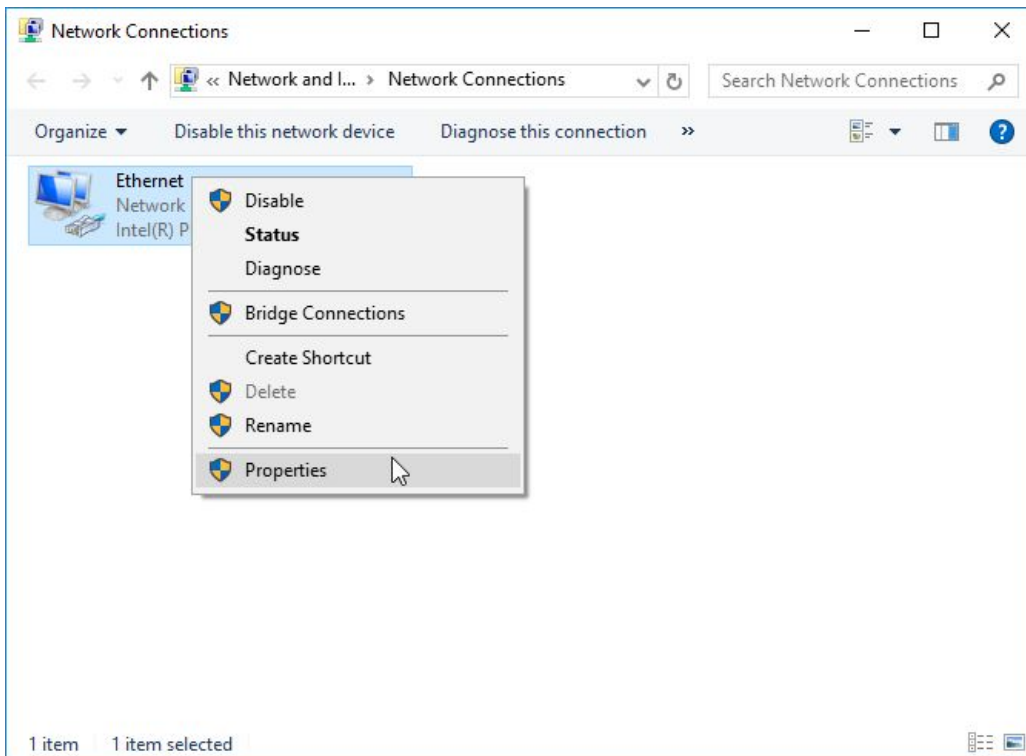
2. Write in the executer window (**ncpa.cpl**) and press the button (ENTER)



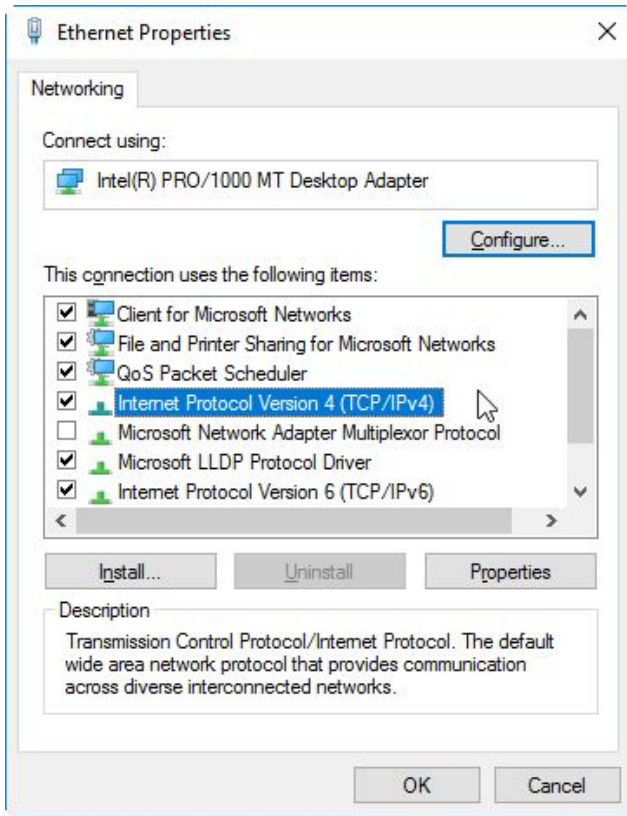
3. Identify your network connection that is active and click the right mouse button on your connection.



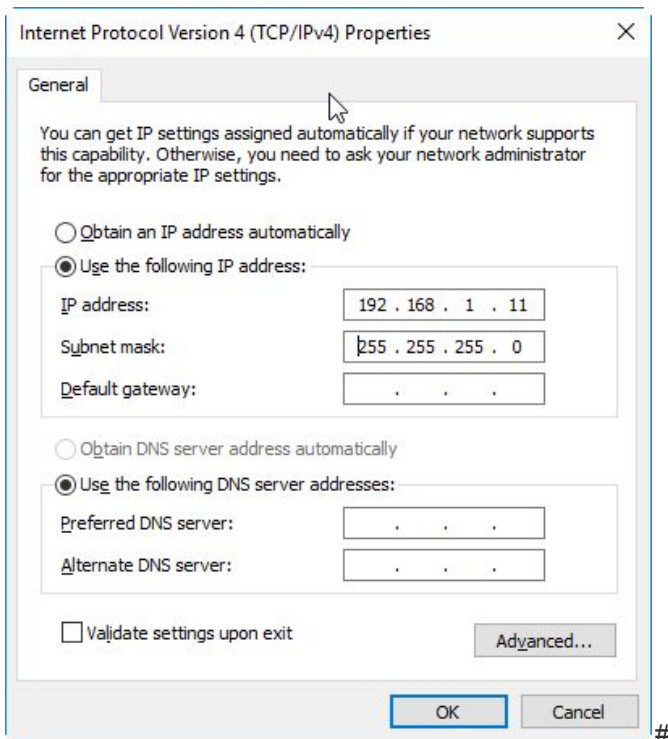
4. click on (Properties)



5. Double click on the indicated line : protocol internet version 4 (TCP/IPv4)



6. If you are using an automatic IP address, change it to 192.168.1.11. Clicking the Subnet Mask check box will automatically become 255.255.255.0



- Press the OK button twice to confirm the changes.
- Open your web browser and enter the following address: 192.168.1.254



- Press the button: English
- You are now in the configuration interface of your A4 DOMINATOR